








CAPTIN JACK



OPERATION MANUAL

1、 Spare Part List

Spare Part:

NO.	NAME	Spec./ Material	QTY	UNIT	DRAWING	REMARK
1	Manual	A4	1	pc		
2	Key	AH57	1	Pc		Ticket door、 coin door、 repair door
		AH78	1	Pc		Coin box door
3	Fuse	6.3A	1	Pc		
4	Wire	1.5M	1	Pc		
5	Long micro switch		1	Pc		
6	Ball		90	pc		80 pcs

2、TROUBLE SHOOTING

Faulty	Failure Cause	Trouble Shooting
Can not insert coin	Do not adjust the coin acceptor。 Have the fake coin。	Adjust the coin acceptor。 Take out the fake coin。
No ticket out	No 12V input voltage。 Ticket dispenser signal wire loosen。 Not put down the wheel for press ticket。 Ticket dispenser drive signal terminal damage。 Not design for ticket out version。	Check the wire of power supply。 Check the wire of drive signal。 Put down the ticket wheel。 Change the main board。 Adjust for ticket out version。
No music	Volume is low。 Sound input wire damage。 Speaker damage。 Sound amplifier damage。 PC board damage。 Audio plug wire loosen。 Speaker connect or not。	Adjust the volume。 Connect the wire。 Change the speaker。 Change the main board。 Change the wire。 Connect the audio wire。 Open the audio and connect the power。
No movement	No power。 Do not turn on the power。 Fuse damage。 No output for the power supply。 No power from the main board。 Main board damage。	Turn on the power。 Turn on the power。 Change the new fuse。 Change the power supply。 Connect the power wire。 Change the main board。
No score	Infrared connection line dropped。 Infrared damage。	Connect the wire。 Change the infrared。

3、 GAME INSTRUCTION

3-1 Game Instruction

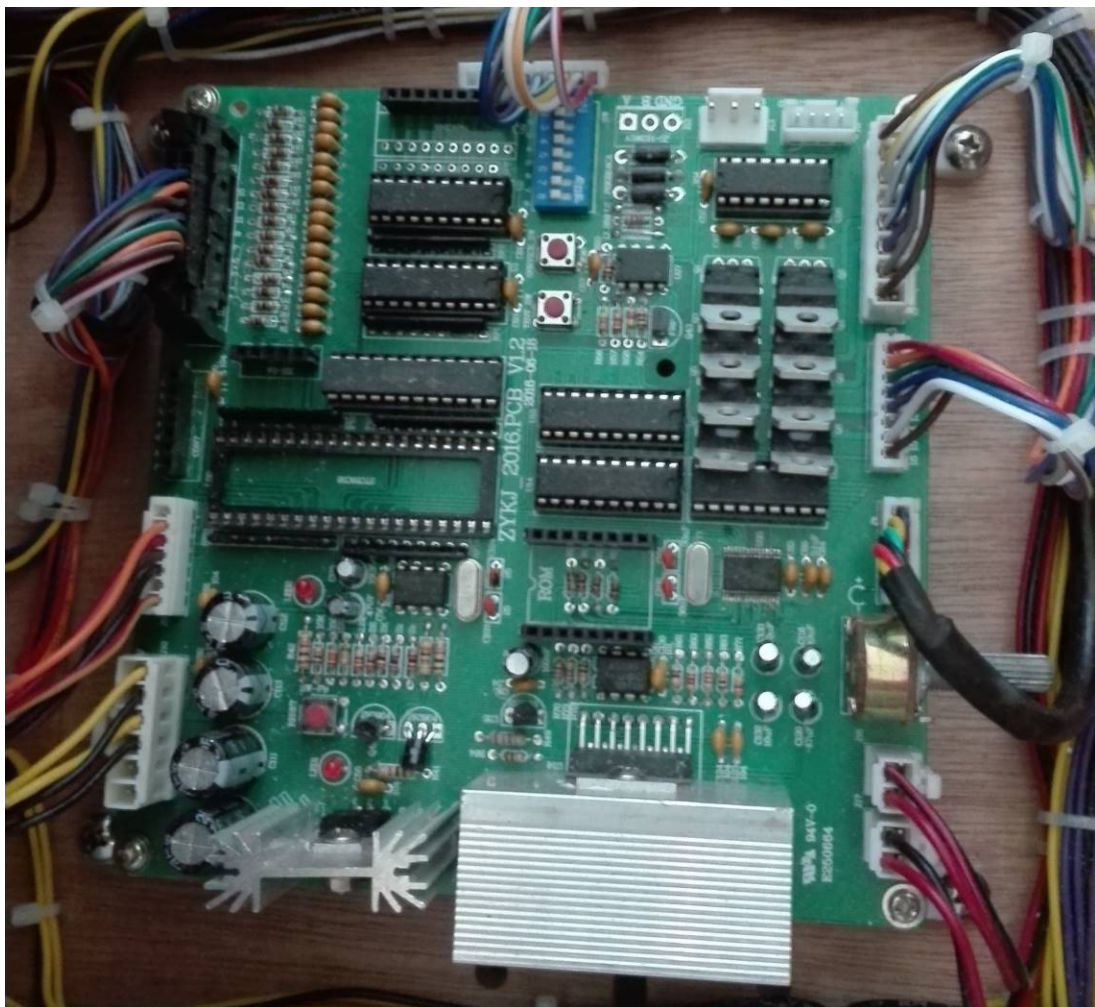
1. Insert coin, press start button to start game.
2. Players move the gun(up/down; left/right) to aim the target, shoot for score.
3. In the game time, much score you get more ticket you got.

3-2 Operation Menu



3-3 Control Signal & Instruction

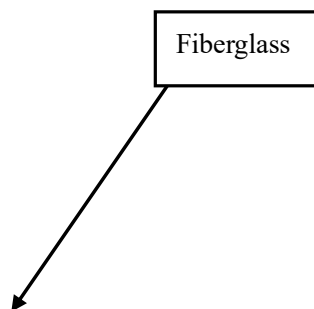
1. See attached IO sheet and drawing, from the main board can know the place for input and output.
2. DIP setting can reference for IO sheet, capatial letter is for factory setting, customer can adjust by yourself.
3. Main board drawing:

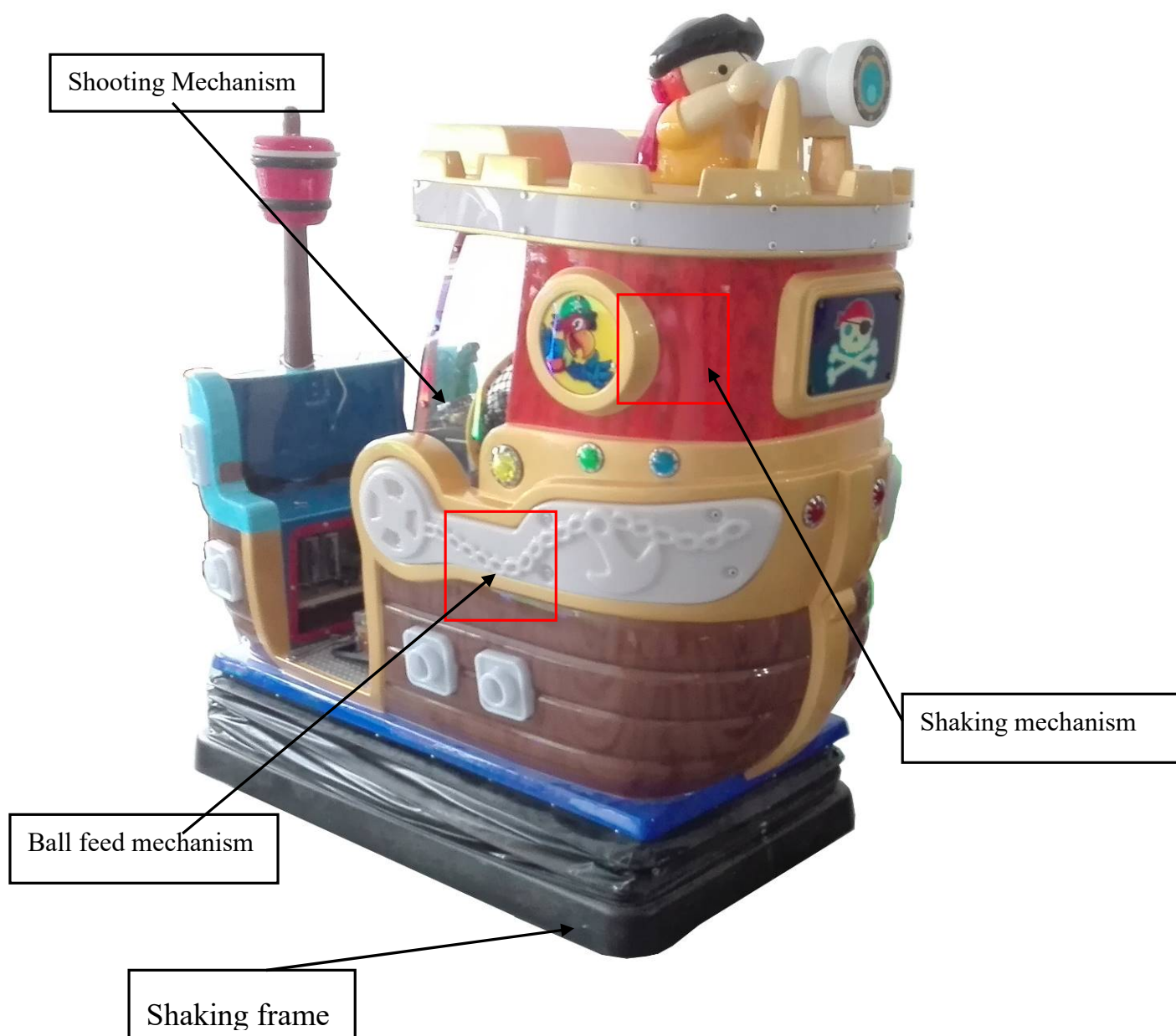


4、 Spare Part List

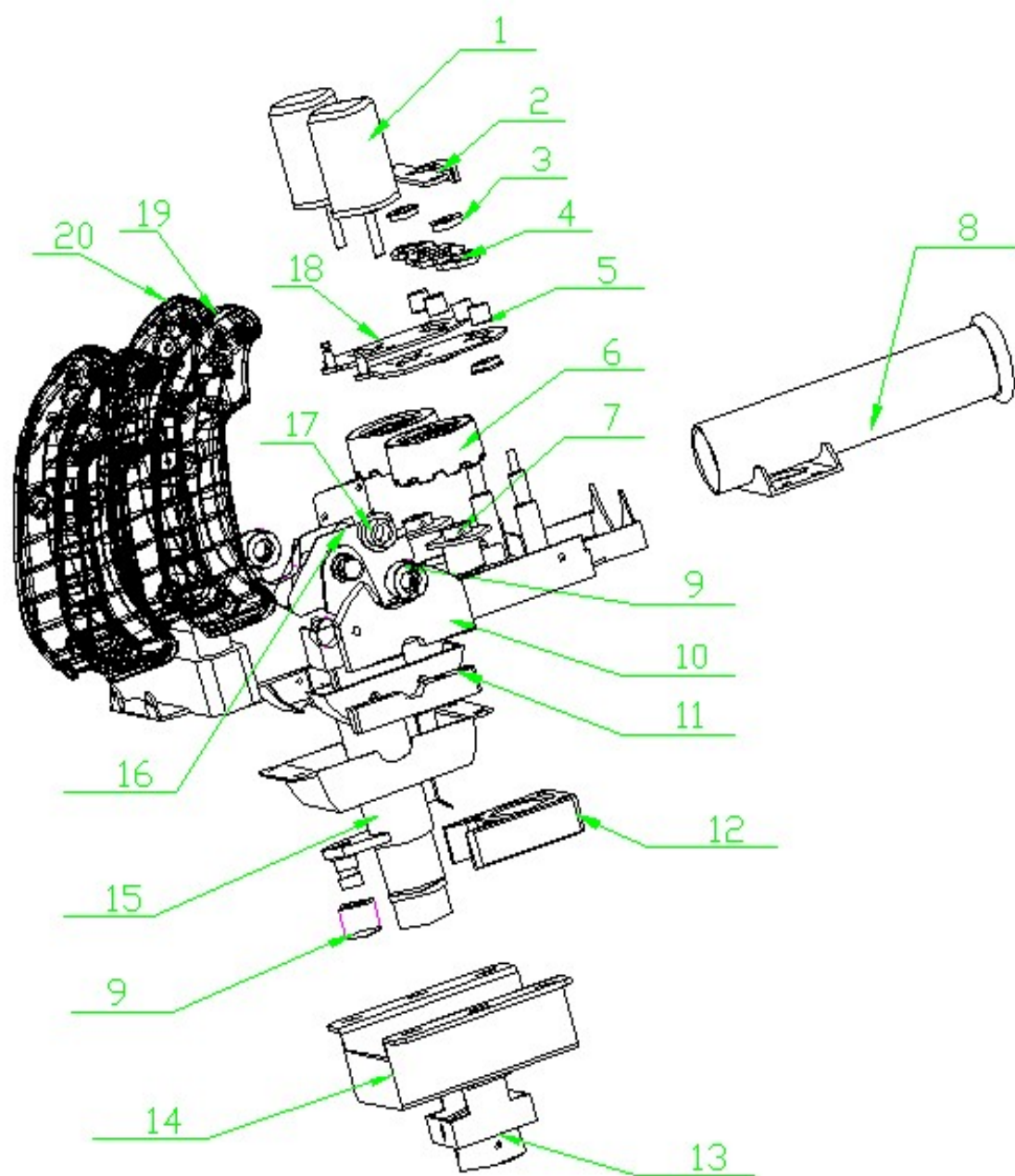
4-1 Mechanism Part

Overall





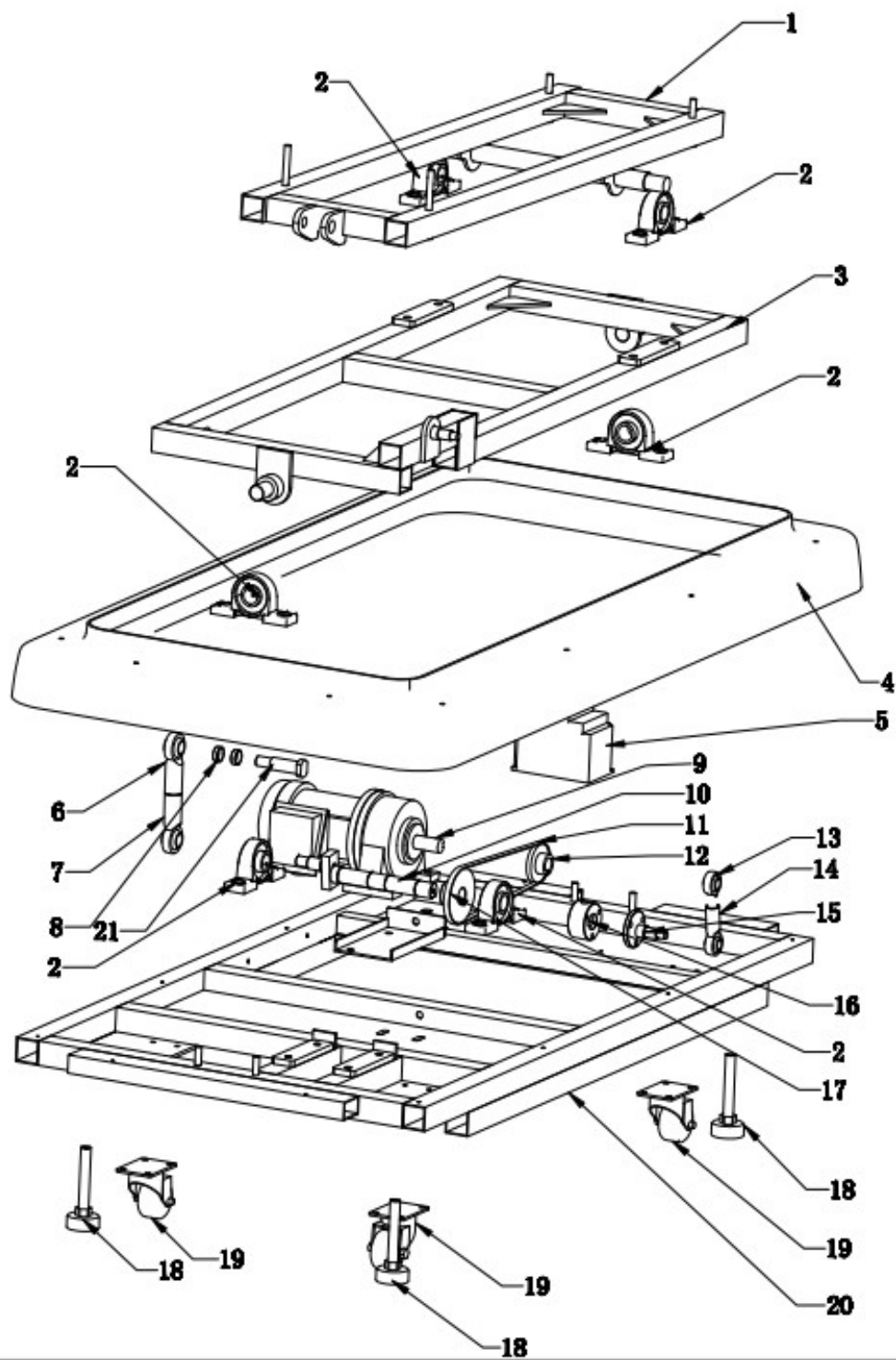
**Ball Feed
Mechanism**



CAPTIN JACK OPERATION MANUAL

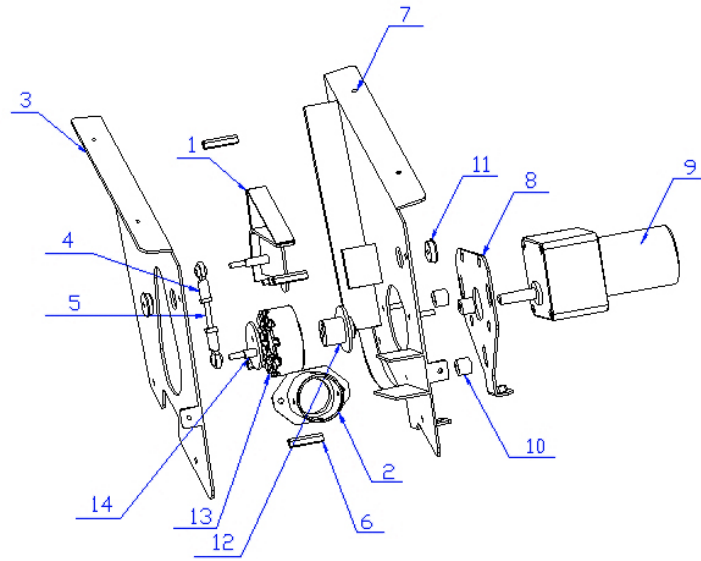
NO.	Drawing No.	Name	Spec. / Material	QTY
1		Motor	ZYTD38SRZ-R(55) 24V3000RPM	2
2		Adjust board	Stainless	1
3		Side bearing	F688	2
4		Synchro board	Stainless	2
5		Pole(common part)	Nylon	4
6		Ball wheel(common part)	Silicone	2
7		Shooting motor base	Aluminum	2
8		Tube welding	Q235	1
9		Rubber(common part)	PU	3
10		Side board A	Q235	2
11		Side board B(common part)	Q235	2
12		Limit block	Q235	1
13		Connector B	Stainless	1
14		Fixing base	Q235	1
15		Ball feed tube	Q235	1
16		Turning bucket	Stainless	1
17		Copper bush(common part)	Copper	2
18		Motor board	Stainless	2
19		Handle left		2
20		Handle right		2

Shaking Frame



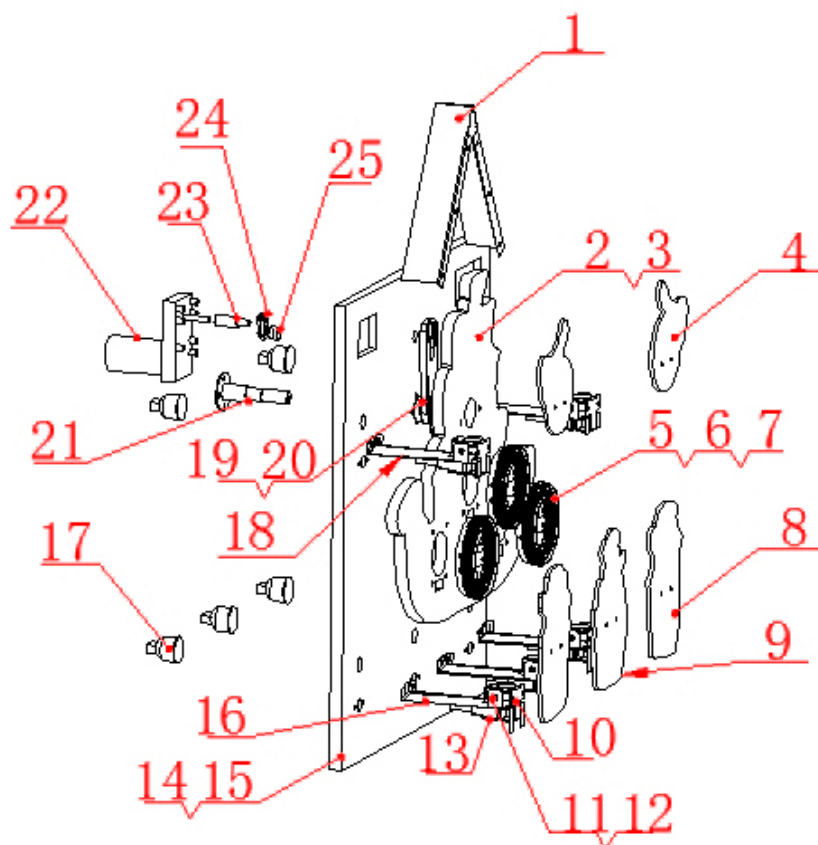
NO.	Drawing No.	Name	Spec.	Material	QTY
1		Up shaking frame		Q235	1
2		Bearing with base	UCP205		6
3		Down shaking frame		Q235	1
4		Frame cover	Black	ABS	1
5		Inverter			1
6		Joint bearing	M16 outer tooth		1
7		Joint bearing	M16 inner tooth		1
8		Sleeve		Q235	2
9		Motor	GH22-200-40S		1
10		Axis		45" iron	1
11		Chain	5"chain		22
12		Drive chain	11 gear	45" iron	1
13		Joint bearing	M20 inner tooth		1
14		Joint bearing	M20 outer tooth		1
15		Flange shaft		45" iron	1
16		Connecting flange		45" iron	1
17		Drive Sprocket	16 gear	45"iron	1
18		Top foot		Stainless	4
19		Foot wheel	2.5"	Stainless	4
20		Base		Q235	1
21		Small shaft		45" iron	1

Ball Feed Mechanism



NO.	Drawing NO.	Name	Spec. / Material	QTY
1		Pull ball rod	201 Stainless	2
2		Connector A welding	201 Stainless	2
3		Ball feed side board A	201 Stainless	2
4		Joint bearing	M4 inner tooth	2
5		Screw	M4*50 outer tooth	2
6		Roller sleeve B	Black nylon	10
7		Ball feed side board B	201 stainless	2
8		Motor board	201 stainless	2
9		Motor		2
10		Adjust sleeve	201 stainless	6
11		Side bearing	F634	4
12		Friction base	Aluminum	2
13		Rubber	Yellow rubber	2
14		Ball feed cover	201 Stainless	1

Shaking Mechanism

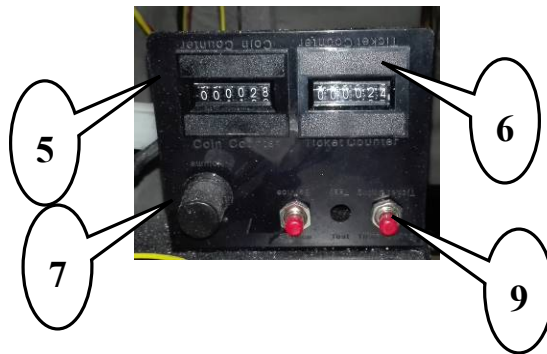


NO.	Drawing NO.	Name	Spec. / Material	QTY
1	HDXPS-01-11	Blocking cover	Stainless 201	1
2	HDXPS-05-05	Panel	Plywood	1
3	HDXPS-03-13	Boat	PVC +PE	1
4	HDXPS-03-07	Bomb	PVC	Left/right
5	HDXPS-04-07	Lamp ring sleeve	White rubber	3
6	HDXPS-04-08	Lamp ring	Clarity PC	3
7	HDXPS-04-09	Lamp ring back cover	Black ABS	3
8	HDXPS-03-05	Clown A	PVC	2
9	HDXPS-03-06	Clown B	PVC	1
10	HDXPS-01-17	Balance weight	Stainless 201	5
11		F674 bearing		10

CAPTIN JACK OPERATION MANUAL

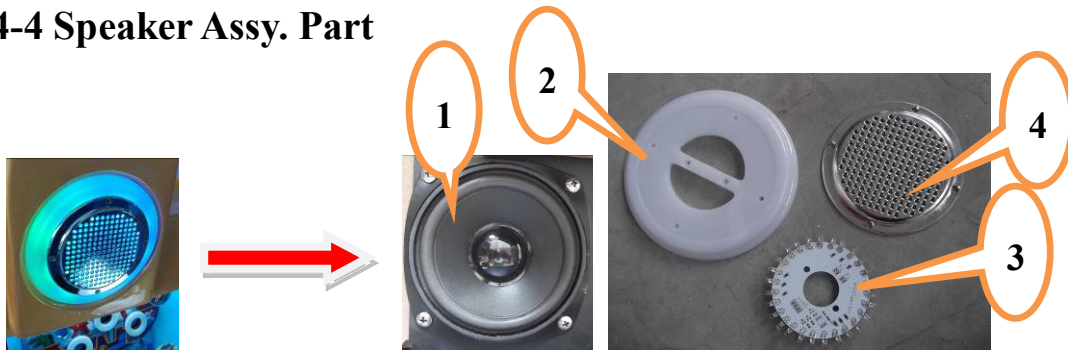
12	HDXPS-02-05	674 Axle	Stainless 201	10
13		Detector		5
14	HDXPS-03-04	Background board		1
15	HDXPS-05-03	Background board	Plywood	1
16	HDXPS-01-16	Fixing welding part A	Stainless 201	3
17		1W spotlight		5
18	HDXPS-01-46	Fixing welding part B	Stainless 201	2
19	HDXPS-01-19	Eccentric plate welding part	Stainless 201	1
20		6002 bearing		2
21	HDXPS-01-42	Flanged shaft	45#	1
22		Motor		1
23	HDXPS-02-14	Connector axle	Stainless	1
24	HDXPS-02-15	Skewing	45#	1
25		Bolt bearing		1

4-2 Coin Assy. Part



NO.	Drawing NO.	Name	Spec. / Material	QTY
1		Coin acceptor	Side Electronic LK100M	2
2		Coin box	Iron	1
3		Ticket machine		1
4		Lock AH78	Short lock 78	1
5		Counter frame	Black plastic	1
6		Six bit counter	C-012	2
7		Volume adjuster	Black	1
8		Ticket box		1
9		Reset button		2

4-4 Speaker Assy. Part



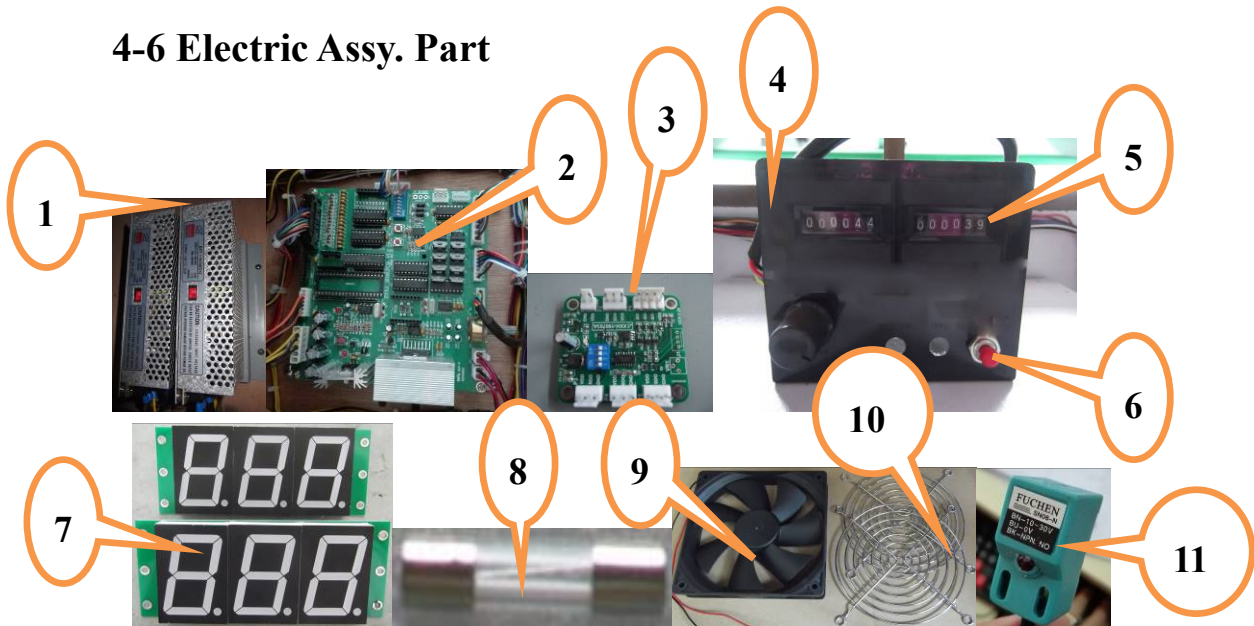
NO.	Drawing NO.	Name	Spec. / Material	QTY
1		Round speaker	4"8Ω15W	2
2		White Arylic	Arylic	2
3		Speaker light ring	Red, Green, Blue three color light ring	2
4		Speaker cover	Silver	2

4-5 Fuse & Power Assy. Part



NO.	Drawing NO.	Name	Spec. / Material	QTY
1		Fuse base	HJMF-527	1
2		Power cord	6.3A	1

4-6 Electric Assy. Part



NO.	Name	Spec. / Material	QTY	UNIT
1	Power supply	12V 220W	1	Pc
		12V 150W	1	Pc
2	Main board		1	Pc
3	Magic light control board	12V	1	Pc
4	Counter frame	Black plastic	1	Pc
5	Six bit counter	C-012	2	Pc
6	Reset button	CSAN.PCB	2	Pc
7	Filter		1	Pc
8	Fuse		1	Pc
9	Digital tube		2	Pc
10	Motor		1	Pc
11	Detector		5	pc

4-7 Art Part



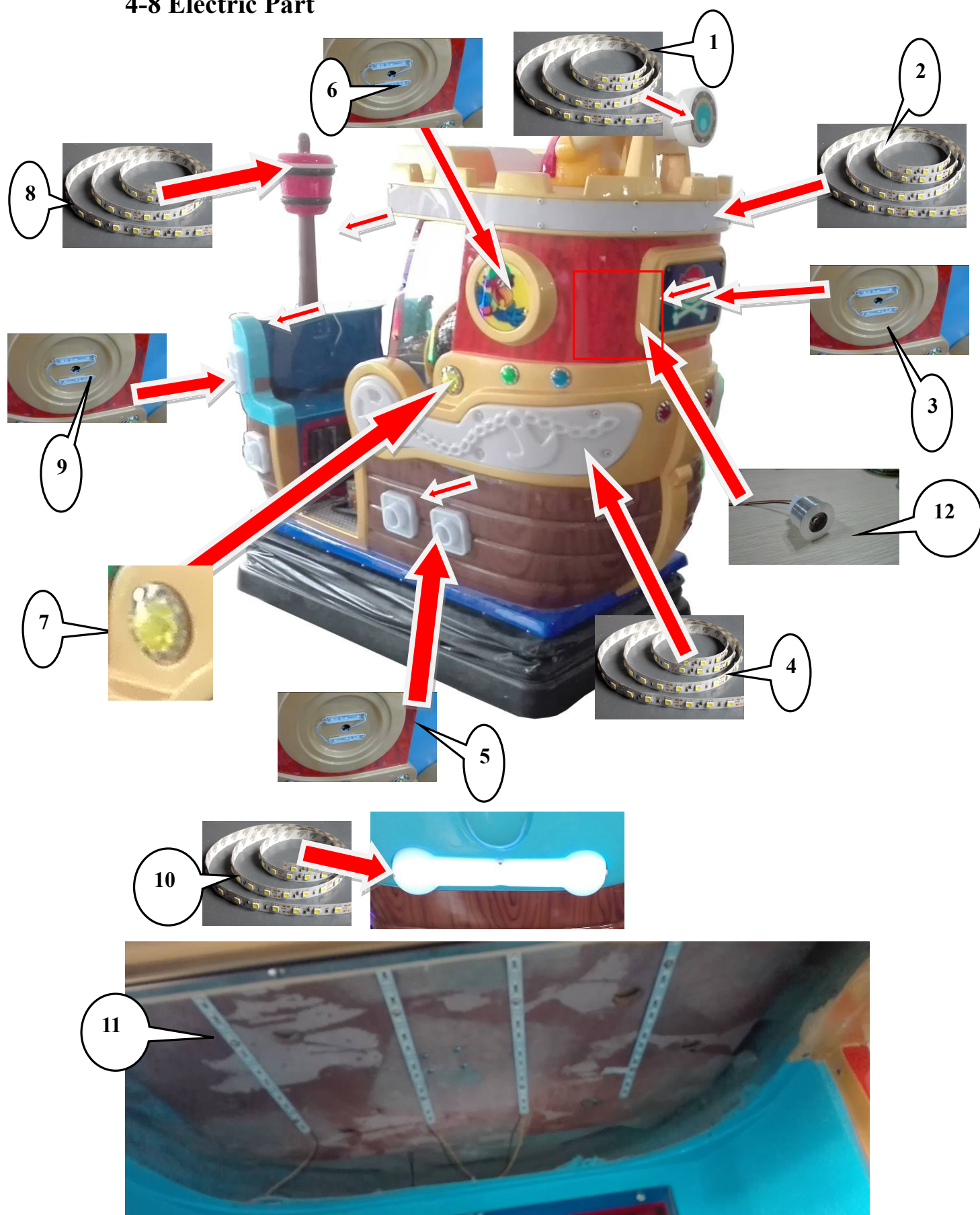
NO.	Drawing NO.	Name	Spec. Material	QTY
1		Cabinet menu	Surface glue	1
2		Cannon cover menu	Surface glue	1
3		Repair door menu	Surface glue	1
4		Boat menu A	Surface glue	1
5		Boat menu B	Surface glue	2
6		Boat menu C	Surface glue	1
7		Main menu	Surface glue	1
8		Telescope menu	Surface glue	1



NO.	Drawing NO.	Name	Spec. / Material	QTY
1		Ticket mouth	White sticker	1
2		Fork label	White sticker	4
3		Repair label	White sticker	1
4		HTHP label	White sticker	1
5		Fuse/current label	White sticker	1
6		HP label	White sticker	

7		Indoor label	White sticker	1
---	--	--------------	---------------	---

4-8 Electric Part



NO.	Name	Spec. / Material	QTY
1	Telescope light	12V/5050RGB soft lamp strip/35CM	1
2	Side light	ADS-75123-2835	1
3	Frontrylic light	ADS-75123-2835	4
4	Side light	12V/5050RGB soft lamp strip/35CM	2
5	Down side light	ADS-75123-2835	12
6	Side Arylic light	ADS-75123-2835	4
7	Spot light		8
8	Flag rod light	3528 12V Blue L:0.4m W:8mm	1
9	Seat side light	ADS-75123-2835	4
10	Back light	60珠/m2811 Symphony light 12V/0.3m	1
11	Top light	MX-S5050W 400mm	4
12	Inner spotlight	12V Yellow light	5